

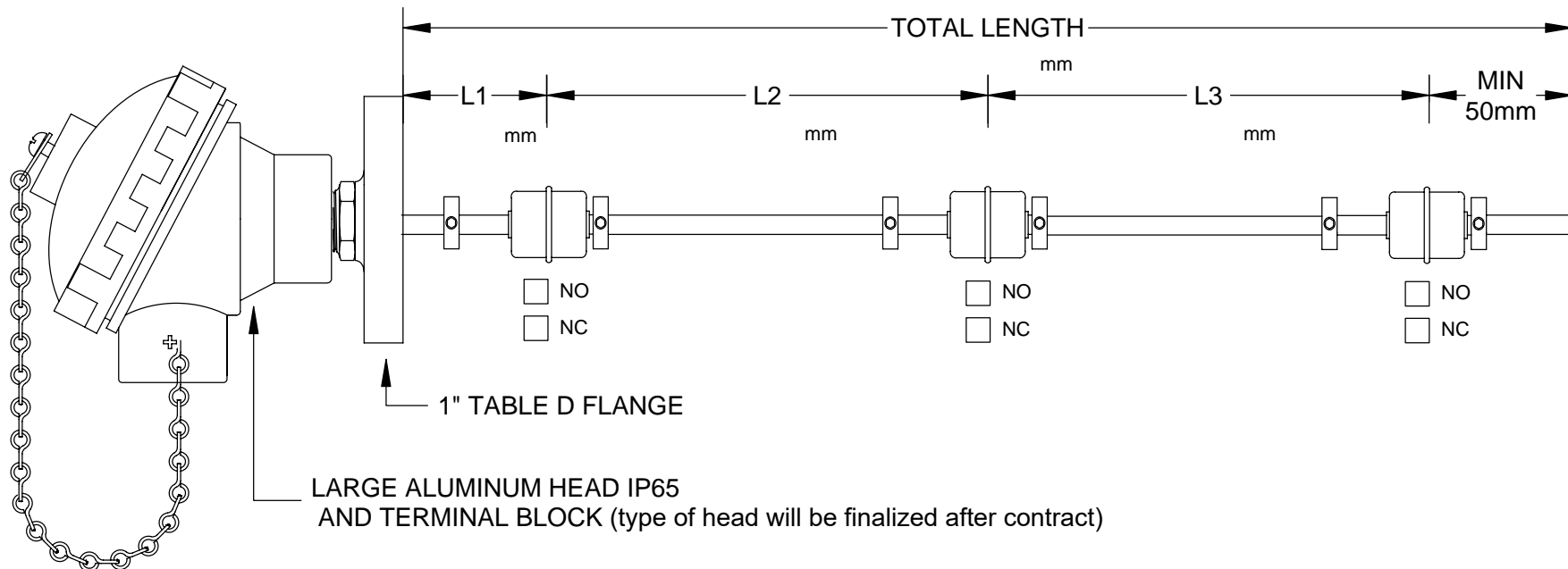
D

C

B

A

NOTE : MINIMUM DISTANCE BETWEEN FLOATS IS 70mm



**PROCESS CAPABILITIES**

- STAINLESS STEEL CONSTRUCTION
- UP TO 5 FLOATS PER ASSEMBLY MAXIMUM LENGTH 2000mm
- INDIVIDUAL OR COMMON CIRCUIT WIRING
- SPECIAL THREADS AND LENGTHS AVAILABLE
- SPECIFIC GRAVITY 0.7
- TEMPERATURE RATING 120'C MAXIMUM
- PRESSURE RATING :20 kg/cm2 MAXIMUM
- FLANGE MOUNT MULTI -LEVEL ASSEMBLY

**DESCRIPTION:**

**Float Switch (without Chamber)**



**ARAMAK SANAT HOOSHMAND**

DRAWN BY: MS.Salari 1/22/2023  
 CHECKED BY: MR.Ghasemi 1/28/2023  
 DESIGNED BY: MR.Zalpour 1/23/2023

SCALE: N / A

PURCHASE:

NOTE:

Drawing Not to Scale  
Unit: mm

REV:0

WWW.ARAMAKCO.COM

EMAIL: Info@ARAMAKCO.COM

D

C

B

A

4

4

3

3

2

2

1

1